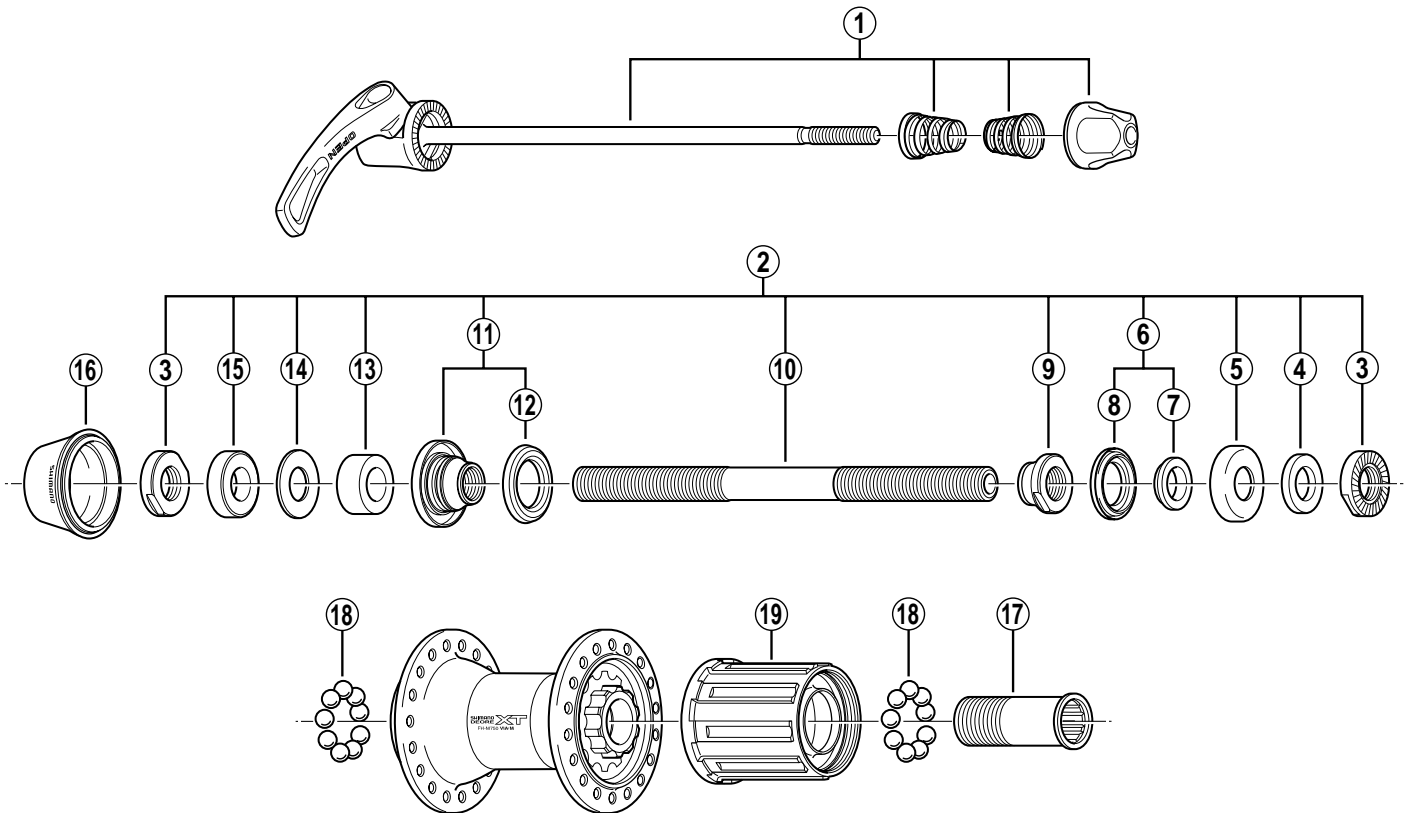


DEORE XT Freehub FH-M750-N 9-Speed



- Over Lock Nut Dimension: 135 mm (5-5/16")
- Use with CS-M750.

FH-M750
FH-M737-A
FH-M570

ITEM NO.	SHIMANO CODE NO.	DESCRIPTION	INTERCHANGEABILITY		
1	Y-32P 90300	Complete Quick Release 168 mm (6-5/8")	A	B	B
2	Y-3BC 98020	Complete Hub Axle 146 mm (5-3/4")	A		
3	Y-32P 08000	Serated Lock Nut 4 mm	A	A	
4	Y-301 06100	Right Hand Washer 2.3 mm	A		
5	Y-3A0 05100	Right Hand Dust Cap	A		A
6	Y-32X 98020	Right Hand Axle Spacer & Seal Ring	A		A
7	Y-31V 03000	Right Hand Axle Spacer 3.7 mm	A		A
8	Y-214 06000	Right Hand Seal Ring	A		A
9	Y-32P 09000	Right Hand Cone M10 x 9 mm	A	A	
10	Y-360 19209	Hub Axle 146 mm (5-3/4")	A	A	B
11	Y-32P 98030	Left Hand Cone (M10 x 16 mm) w/Dust Cover & Seal Ring	A	A	
12	Y-377 10000	Left Hand Seal Ring	A	A	A
13	Y-3BC 04000	Left Hand Axle Spacer 8 mm	A	B	A
14	Y-3AC 09000	Left Hand Washer 0.5 mm	A	A	
15	Y-3AC 08010	Left Hand Axle Spacer 5 mm	A	B	
16	Y-3AC 04000	Rubber Seal	A	A	A
17	Y-3BL 03000	Body Fixing Bolt			
18	Y-000 91310	Steel Ball (1/4") 18 pcs.	A	A	A
19	Y-3BC 98030	Complete Freewheel Body w/Right Hand Dust Cap			

A : Same parts.

B : Parts are usable, but differ in materials, appearance, finish, size, etc.

Absence of mark indicates non-interchangeability.

0103-2054

