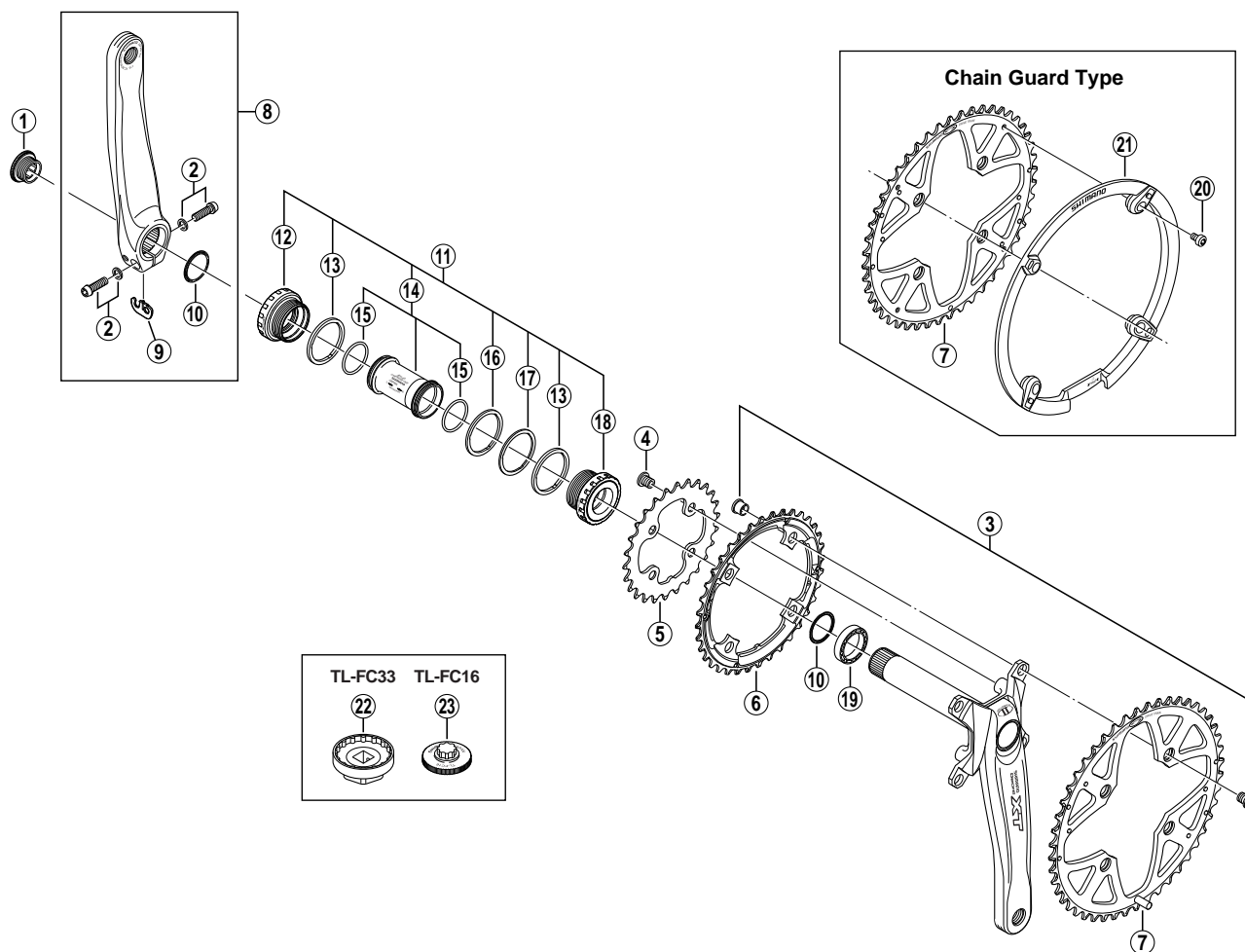


DEORE XT Front Chainwheel FC-M761



• Bolt circle diameter: 104 mm...(For outer gear and middle gear), 64 mm...(For inner gear)

ITEM NO.	SHIMANO CODE NO.	DESCRIPTION
1	Y-1F8 11000	Crank Arm Fixing Bolt
2	Y-1F8 98010	Clamp Bolt (M6 x 19) & Washer
3	Y-1C6 98020	Double Gear Fixing Bolt (M8 x 9.2) & Nut (4 sets)
4	Y-1BD98030	Inner Gear Fixing Bolt (M8 x 8.5 / 4 pcs.)
5	Y-1F9 26000	Chainring 26T (Black)
6	Y-1F9 98010	Chainring 36T (Black)
7	Y-1F9 98020	Chainring 48T (Black)
	Y-1F9 98030	Chainring 48T (Black) for Chain Guard
8	Y-1F8 98100	Left Hand Crank Arm 170 mm
	Y-1F8 98110	Left Hand Crank Arm 175 mm
* 9	Y-1FU 98120	Plate
10	Y-1F3 16000	Ring
11	Y-1FV 98060	Adapter Unit
12	Y-1FU 98090	Left Hand Adapter (B.C.1.37" x 24T) English Thread
13	Y-1F8 13000	Spacer (2.5 mm)
14	Y-1E5 98210	Inner Cover & O-Ring
15	Y-1TF 21000	O-Ring
16	Y-1F8 13100	Spacer (1.8 mm)
17	Y-1F8 13110	Spacer (0.7 mm)
18	Y-1FU 98100	Right Hand Adapter (B.C.1.37" x 24T) English Thread
19	Y-1F9 13000	Spacer (6.5 mm)
20	Y-1E4 98250	Chain Guard Fixing Bolt (4 pcs.)
21	Y-1F9 12000	Chain Guard
22	Y-130 09230	TL-FC33 Adapter Installation Tool
23	Y-130 09220	TL-FC16 Crank Arm Installation Tool

0510-2262D

Specifications are subject to change without notice.

SHIMANO